



**PINPOINT
PERFECTION**

NDI[®]|HX

AVer PTC330N

AI Auto Tracking NDI[®]|HX PTZ Camera



Full NDI|HX for Greater Reach

The PTC330N complies with the most rigorous NDI standards to deliver the lowest latency for on-air camera control, switching, and streaming - all via IP connection. It makes live broadcasts faster and simpler, allowing users to stream for larger audiences without complicated and expensive equipment. Design efficient and flexible IP workflows at will.

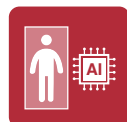
NDI[®]



30X Optical Zoom



IP/HDMI/USB/
3G-SDI Outputs



Human Detection AI



Presenter Mode



Zone Mode



Hybrid Mode



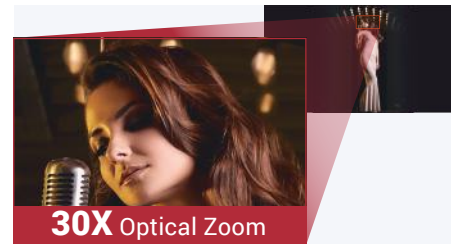
Intuitive Web UI



Upside-Down Installation

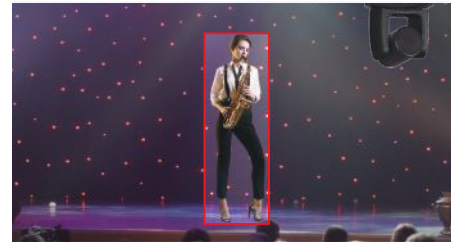
30X Optical Zoom & 2X Sensor Zoom

The zoom power of the PTC330N reaches an incredible 60X (30X optical and 2X sensor zoom). It works even while the camera is panning and tilting, allowing you to highlight content and rapidly change shooting angles. Operate a closer and clearer video feed with the unbeatable PTZ performance of the PTC330N.



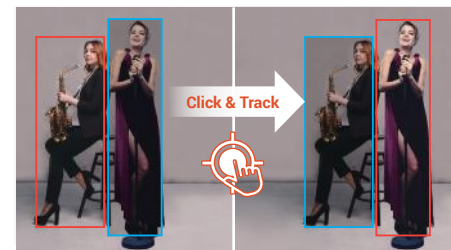
Human Detection AI

Welcome AVer's most advanced AI tool yet—Human Detection. This highly accurate processing function enables the PTC330N to easily detect and capture human forms and moving objects in seconds. Never miss a tracking target again.



Click & Track

Redirect focus in an instant with the PTC330N. Simply click on a target to quickly adjust the shooting angle and initiate precise tracking. This advanced feature is easy for anyone to operate via remote control or Web UI.



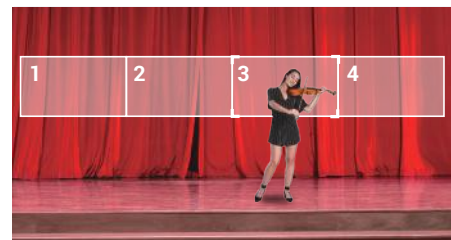
Presenter Mode

Track your target everywhere with Presenter Mode. This feature gives presenters the flexibility to leave the stage and interact with the audience, all while being continuously tracked. The camera stays locked on its target, even if other people or objects get in the way.



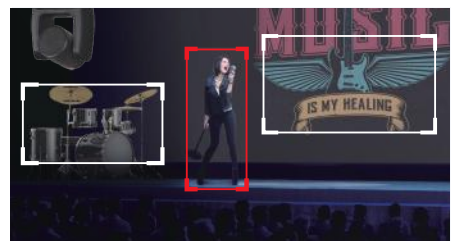
Zone Mode

Zone Mode enhances your ability to capture content on multiple displays. Create up to four Content Zones to steadily capture the content on display rather than the presenter's movements.



Hybrid Mode

Hybrid Mode provides the utmost freedom of movement for performing artists. Preset effective areas for Zone Tracking in advance, and once you step into those areas, you will be targeted together with the content. When you are outside, you are just like in Presenter Mode.



Product Specifications

Camera		General	
Image Sensor	1/2.8" 1080p Exmor CMOS	Power Requirement	AC 100 - 240V to DC 12V/5A
Effective Picture Elements	2 Megapixels	Power Consumption	18W
Output Resolutions	1080p/60, 1080p/59.94, 1080p/50, 1080p/30, 1080p/29.97, 1080p/25, 1080i/60, 1080i/50, 720p/60, 720p/59.94, 720p/50	PoE	PoE+
Minimum Illumination	0.7 lux (IRE50, F1.6, 30fps)	Dimensions (W x H x D)	180.0 x 183.5 x 145.0 mm
S/N Ratio	≥ 50 dB	Net Weight	1.7 (±0.1) kg
Gain	Auto, Manual	Application	Indoor
TV Line	900 (Center)	Tally Lamp	Yes
Shutter Speed	1/1 to 1/10,000 sec	Security	Kensington Slot
Exposure Control	Auto, Manual, Priority AE (Shutter, IRIS), BLC, WDR	Remote Control	Infrared
White Balance	Auto, Manual	Operating Conditions	Temperature: 0 °C to +40 °C Humidity: 20% to 80%
Optical Zoom	30X	Storage Conditions	Temperature: -20°C to +60°C Humidity: 20% to 95%
Digital Zoom	12X	IP Streaming	
Sensor Zoom	2X	Resolution	1080p 60fps
Viewing Angles	DFOV: 72.9° (Wide) to 2.64° (Tele) HFOV: 65.1° (Wide) to 2.34° (Tele) VFOV: 38.4° (Wide) to 1.36° (Tele)	Network Video Compress Formats	H.264, H.265
Focal Length	f = 4.3 mm (Wide) to 129 mm (Tele)	Maximum Frame Rate	1080p 60fps
Aperture (Iris)	F = 1.6 (Wide) to 4.7 (Tele)	Bit-Rate Control Modes	VBR, CBR (selectable)
Minimum Working Distance	Wide: 0.01 m Tele: 1.2 m	Range of Bit-Rate Setting	512 Kbps to 32 Mbps
Pan / Tilt Angles	Pan: ±170° Tilt: +90° / -30°	Network Interfaces	10 / 100 / 1000 Base-T
Pan / Tilt Speed (Manual)	Pan: 0.1° to 100° / sec Tilt: 0.1° to 100° / sec	Multi-Stream Capability	2 (RTSP / Web Page), 1080p 60fps (max.)
Preset Speed	Pan: 200° / sec Tilt: 200° / sec	Network Protocols	IPv4, TCP, UDP, ARP, ICMP, IGMP, HTTP, DHCP, RTP / RTCP, RTSP, RTMP, VISCA over IP
Preset Positions	10 (IR), 256 (RS-232 / RS-422 / IP)	NDI®/HX Capability	Yes (NDI HX2)
Camera Control - Interfaces	RS-232 (DIN8), RS-422 (RJ45), IP	USB	
Camera Control - Protocols	VISCA (RS-232 / RS-422 / IP), PELCO-D & PELCO-P (RS-232 / RS-422), CGI (IP)	Connector	USB 3.0
Image Processing	Noise Reduction (2D / 3D), Flip, Mirror	Video Format	MJPEG
Power Frequencies	50 Hz, 60 Hz	Audio Format	PCM
AI Auto Tracking Functions		Maximum Video Resolution	1080p
Tracking Modes	Presenter Mode, Zone Mode, Hybrid Mode	USB Video Class (UVC)	UVC 1.1
Audio		USB Audio Class (UAC)	UAC 1.0
Channel	2ch Stereo	Web UI	
Codecs	AAC-LC (48 / 44.1 / 32 / 24K)	Live Video Preview	Yes
Sample Rates	48 / 44.1 / 32 / 24 / 16 / 8 KHz	Camera PTZ Control	Pan, Tilt, Zoom, Focus, Preset Control
Interface		Camera/Image Adjustment	Exposure, White Balance, Picture
Video Outputs	3G-SDI, HDMI, IP, USB	Network Configuration	DHCP, IP Address, Gateway, Subnet Mask, DNS
Audio Outputs	3G-SDI, HDMI, IP, USB	Software Tools	
Audio Inputs	MIC in, Line in	IP Search and Configuration Tool	Support Windows® 7 or later
Package Contents		Warranty	
Camera, Remote Control, Power Adapter, Power Cord, Cable Ties (x 5), Screws (x 10), Cable Fixing Plates (x 2), Ceiling Mount Brackets (x 2), Quick Start Guide		Camera	3 Years
Optional Accessories		Accessories	1 Year
AVer CL01 PTZ Camera Controller, L-Type Wall Mount, RS-232 In/Out Cable, Din 8 To D-Sub 9 Cable			

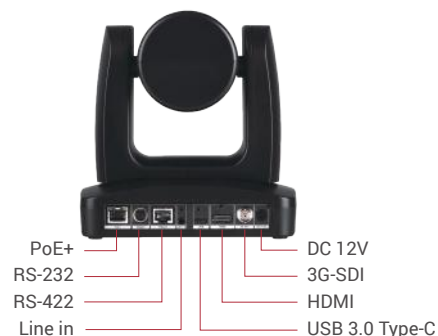
* Specifications may vary depending on location and are subject to change without notice.

Product Appearance

Front



Back



©2021 AVer Information Inc. All rights reserved.
All brand names and logos are trademarks of their respective companies.

www.aver.com



Distributor/Dealer